



PROJECT MANAGEMENT TEAM MEMBERSHIP

7/21/10

Hennepin County

Minnesota Department of Transportation

City of St. Louis Park

St. Louis Park School Board

City of St. Louis Park Neighborhoods

Birchwood

Lake Forest

Blackstone

Lenox

Bronx Park

Sorenson

Brooklawns

South Oak Hill

Brookside

Triangle

Eliot

Wolfe Park

Eliot View

Cedarhurst

Elmwood

Safety in the Park

Twin Cities and Western Railroad

Canadian Pacific Railway

Burlington Northern Santa Fe Railway Company





PROJECT MANAGEMENT TEAM (PMT)

FREIGHT RAIL RELOCATION STUDY

7/21/2010

Roles and Responsibilities

The role of the Project Management Team (PMT) is to provide input and guidance that is representative of the various groups sitting on the PMT, but that also works toward collaborative solutions that effectively and feasibly balance the interests of the varying project stakeholders.

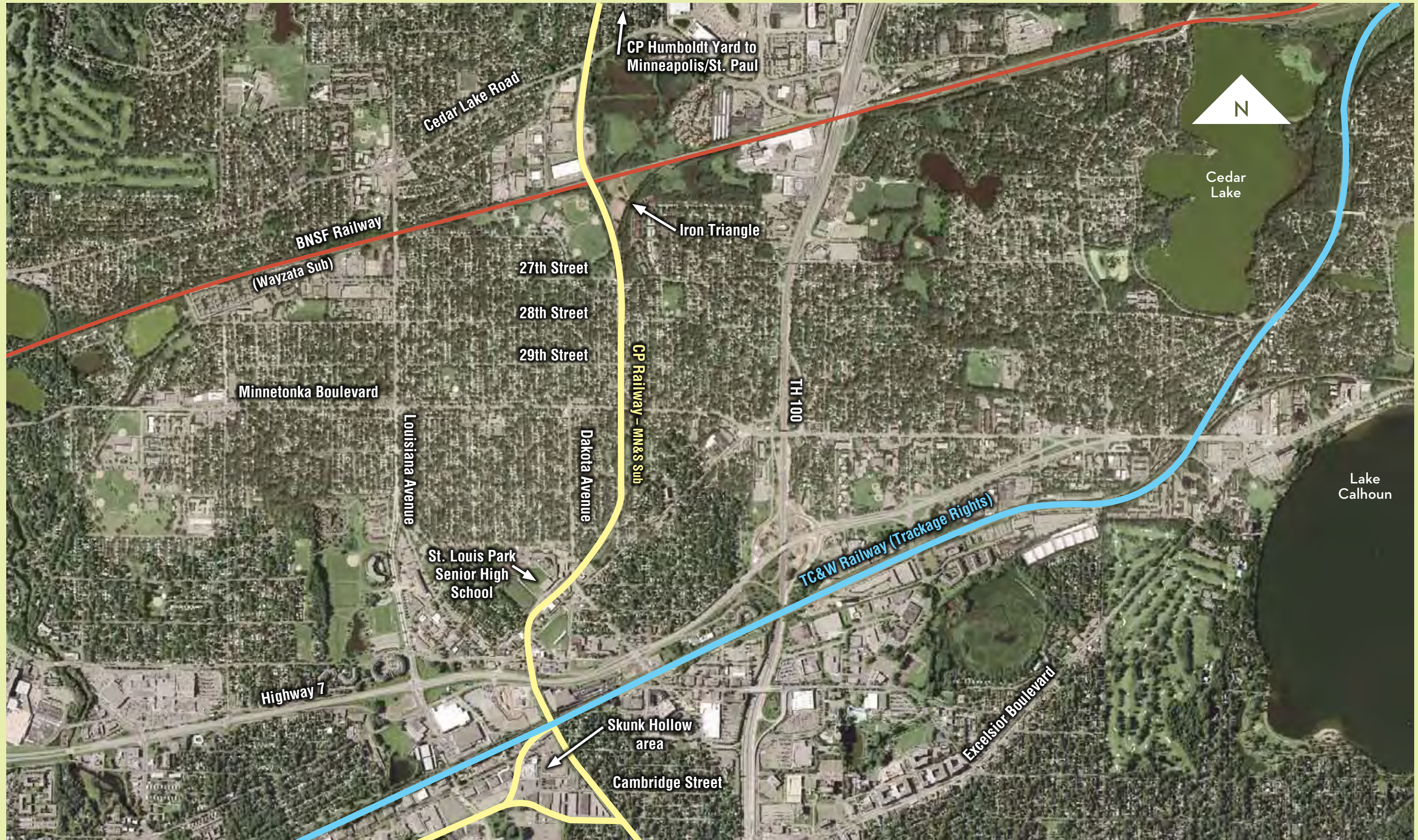
The PMT will meet approximately monthly to review project progress and provide input into decisions at hand. The responsibility of a PMT member is to serve as a communication link to the specific group they represent. Specifically, PMT representatives will be expected to keep their respective groups apprised of project progress and status, and bring input from their groups back to the PMT for consideration. The designated PMT representative should represent the views of the organization they represent, versus reflecting personal opinion. Members will provide input into project issues identification, the development of concepts and priorities, and other project components, while also representing the issues and priorities of their respective groups

PMT members are expected to:

- Commit to attend and participate in all PMT meetings. If the designated representative cannot attend, the alternate will take their place at the table;
- Be respectful of the opinions and issues of other PMT members;
- Act as agents of the study at public open house workshops;
- Report information back to their respective groups;
- Share info at PMT meetings that is reflective of the interests of their respective groups; and
- Work to develop group consensus on issues within their respective groups, and within the PMT.

All Project Management Team meetings are open to the public







OUTLINE OF STUDY PROCESS

7/21/10

PROJECT COORDINATION

- Project Management Team (PMT) Meetings
- Administrative Team Meetings
- Resource Agency Coordination
- Freight Rail Coordination
- Neighborhood Work Sessions
- Public Open House/Hearing (environmental review process)
- Informational Postcard/Project Flyer/Website Updates

ENVIRONMENTAL ANALYSIS

- Define Project's Purpose and Need
- Conduct Existing Condition Assessment
- Data Review
- Field inspections
- Review Findings from Previous Studies
- Coordination with Resource Agencies
- Develop Reasonable and Feasible Alternative(s) for Analysis
- Conduct Social, Economic and Environmental Impact Analysis
- Conduct Community Impact Assessment
- Conduct Traffic Analysis
- Develop Mitigation Measures to Address Adverse Effects





MN&S FREIGHT RAIL STUDY

HENNEPIN COUNTY REGIONAL RAILROAD AUTHORITY AND THE
MINNESOTA DEPARTMENT OF TRANSPORTATION IN COOPERATION WITH THE CITY OF ST. LOUIS PARK

- Prepare and Distribute Environmental Assessment Worksheet (EAW)
- Hold Public Hearing on EAW
- Final Environmental Determination Issued on Project

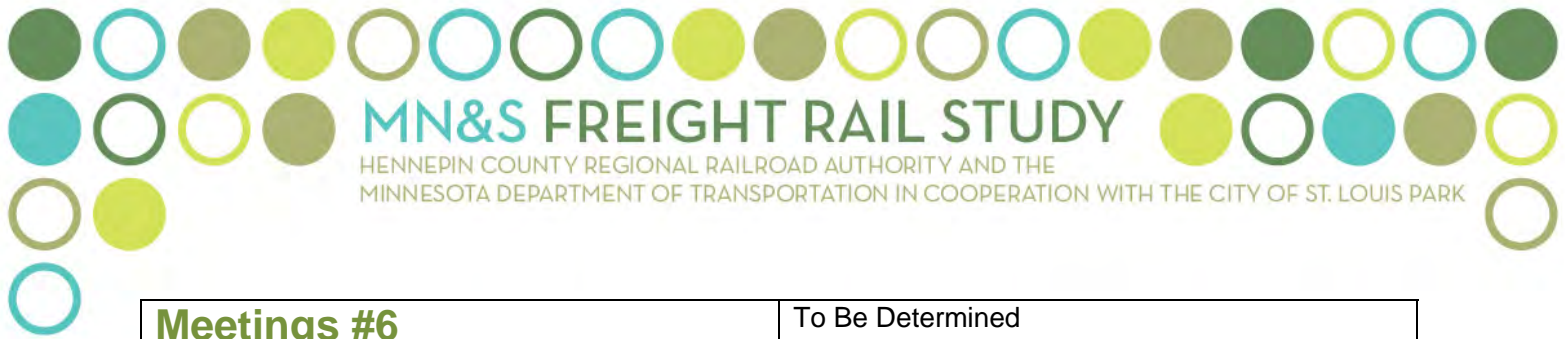
CONCEPTUAL PRELIMINARY ENGINEERING

- Conduct Existing Condition Assessment
- Coordination with Railroads
 - TCW
 - CP
 - BNSF
- Develop Conceptual Preliminary Engineering (PE) Plans in Accordance with all Applicable Local, State, and Industry Standards, Rules, and Regulations
- Incorporation of Appropriate Mitigation Measures
- Prepare Capital Cost Estimates



Project Management Team Meeting	Areas of Focus *
Meeting #1 – July 2010	Project Kick Off Role/Responsibilities Scope of Study/Schedule Open Forum
Meeting #2 – August/September 2010	Purpose and Need General Rail Requirements Existing Conditions Input Regarding Key Issues of Concern Coordination Activities Open Forum
Meeting #3 – September 2010	In Field Review With PMT
Meeting #4 – October/November 2010	Preliminary Concept Development/Review Preliminary Environmental Findings Preliminary Mitigation Measures Coordination Activities Open Forum
Meeting #5– November/December	Refinement of Concepts Environmental Analysis Refinement Mitigation Measure Refinement Coordination Activities Open Forum





Meetings #6	To Be Determined
--------------------	------------------

- Proposed areas of focus are subject to change based on project development, requests from PMT members, and issues identified through the process.

7/21/10

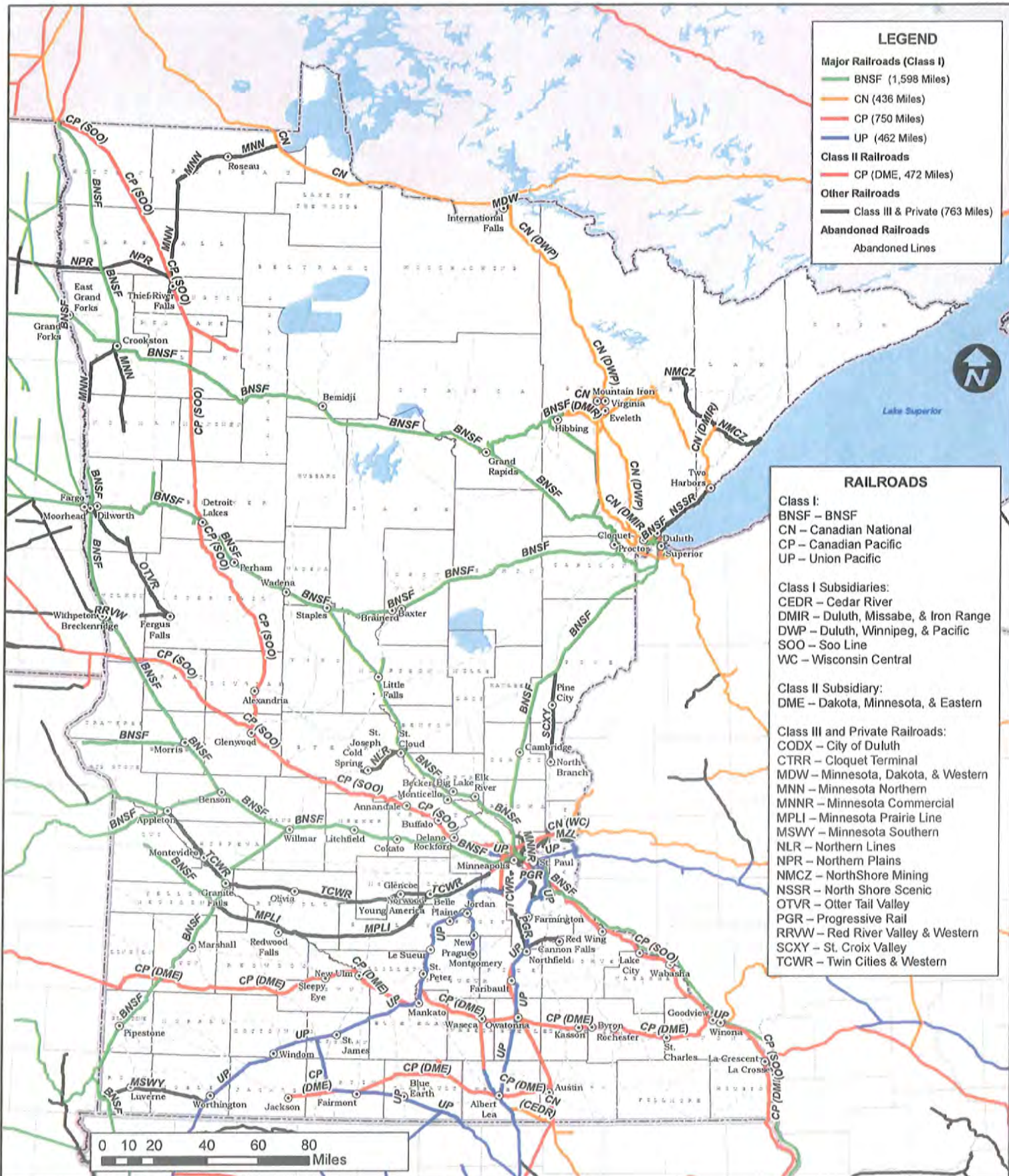




MINNESOTA FREIGHT RAILROAD MAP

Office of Freight and Commercial Vehicle Operations

April, 2009



LEGEND

- Major Railroads (Class I)
 - BNSF (1,598 Miles)
 - CN (436 Miles)
 - CP (750 Miles)
 - UP (462 Miles)
- Class II Railroads
 - CP (DME, 472 Miles)
- Other Railroads
 - Class III & Private (763 Miles)
- Abandoned Railroads
 - Abandoned Lines

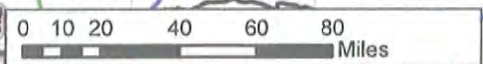
RAILROADS

Class I:
 BNSF – BNSF
 CN – Canadian National
 CP – Canadian Pacific
 UP – Union Pacific

Class I Subsidiaries:
 CEDR – Cedar River
 DMIR – Duluth, Missabe, & Iron Range
 DWP – Duluth, Winnipeg, & Pacific
 SOO – Soo Line
 WC – Wisconsin Central

Class II Subsidiary:
 DME – Dakota, Minnesota, & Eastern

Class III and Private Railroads:
 CODX – City of Duluth
 CTRR – Cloquet Terminal
 MNS – Minnesota, Dakota, & Western
 MNN – Minnesota Northern
 MNNR – Minnesota Commercial
 MPLI – Minnesota Prairie Line
 MSWY – Minnesota Southern
 NLR – Northern Lines
 NMCZ – North Shore Mining
 NSSR – North Shore Scenic
 OTVR – Otter Tail Valley
 PGR – Progressive Rail
 RRWV – Red River Valley & Western
 SCXY – St. Croix Valley
 TCWR – Twin Cities & Western

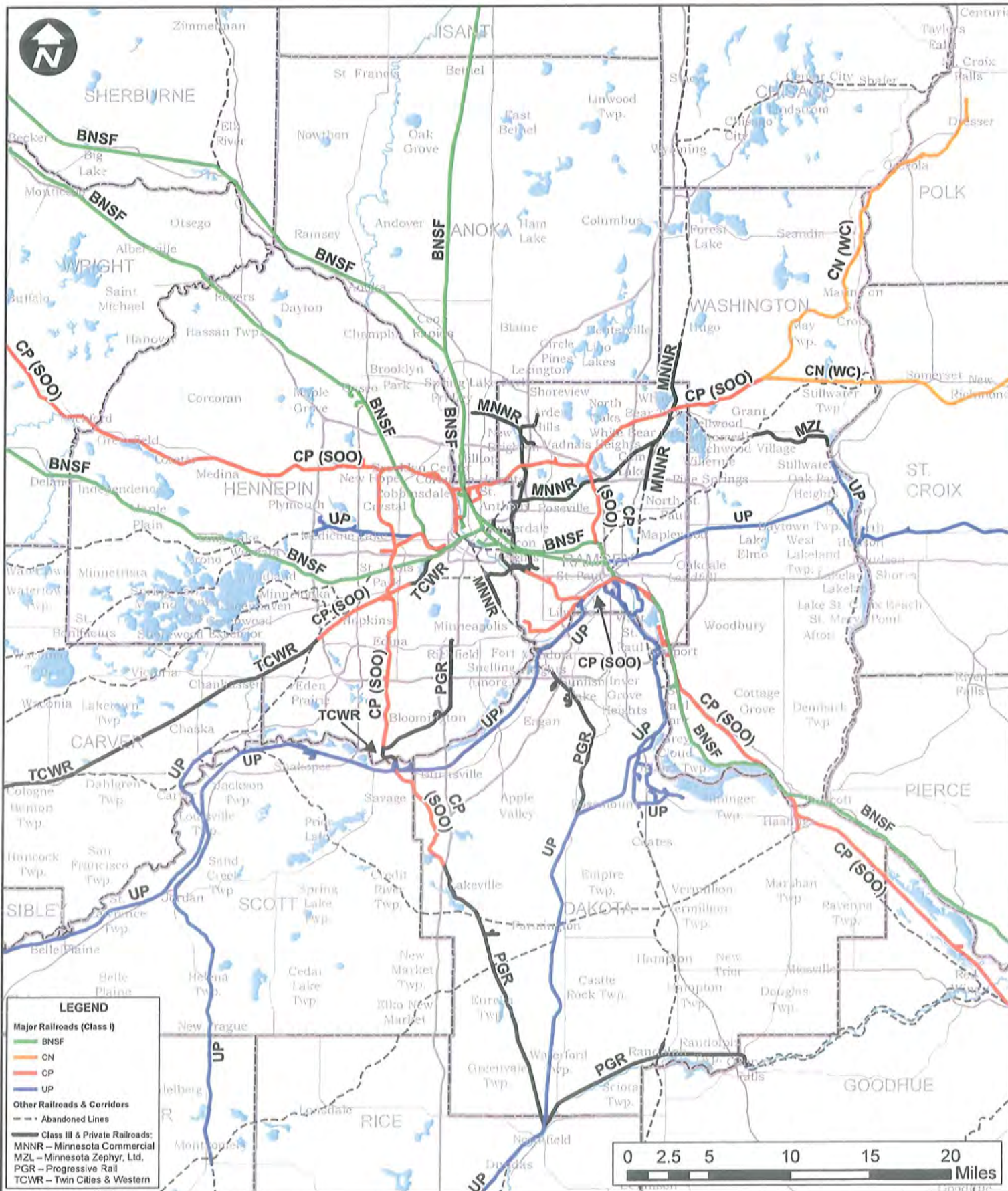


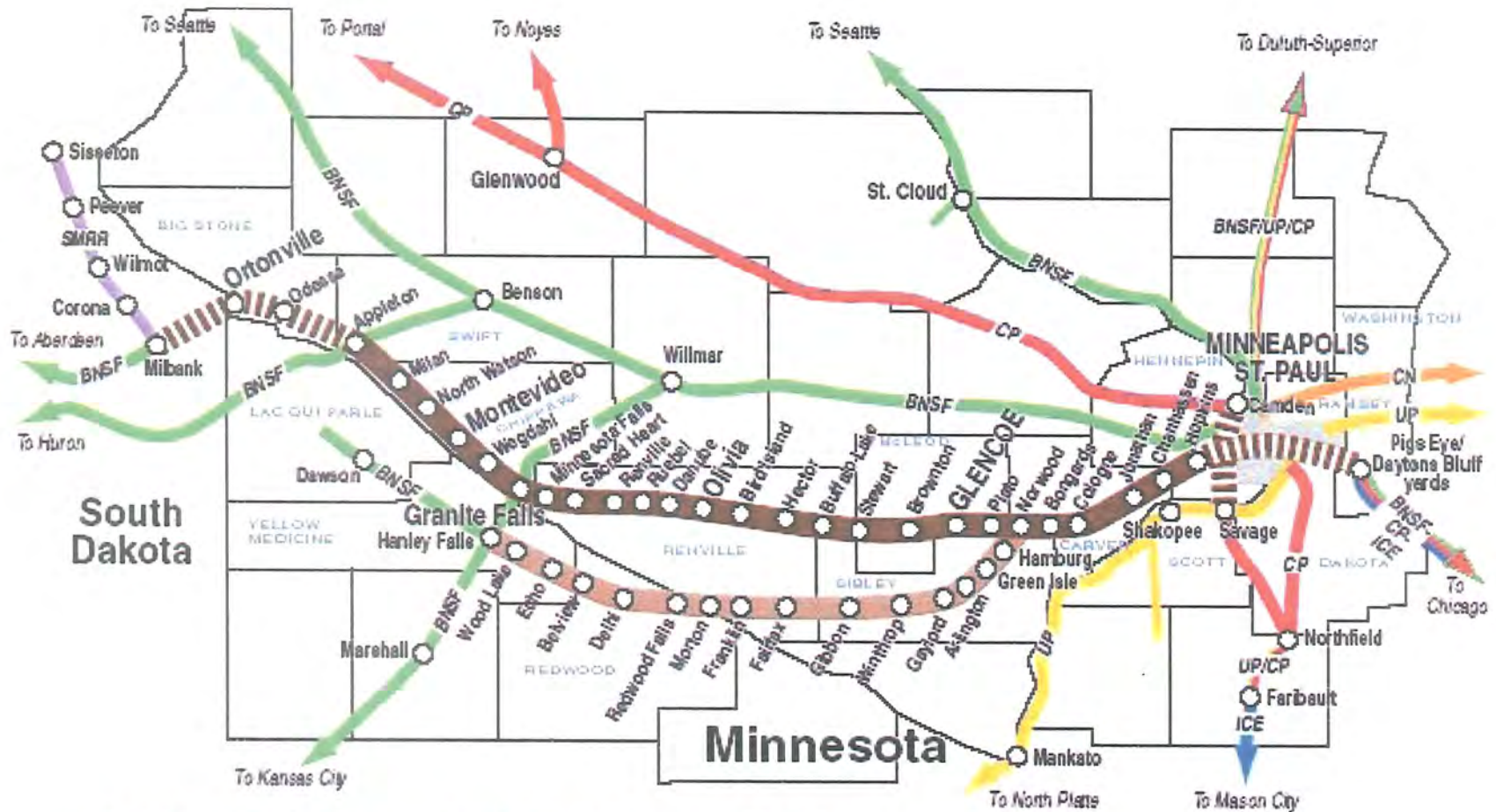


TWIN CITIES AREA FREIGHT RAILROAD MAP




Office of Freight and Commercial Vehicle Operations

July, 2009





Twin Cities & Western Railroad Company

-  Twin Cities & Western
-  Minnesota Prairie Line
-  Trackage rights

